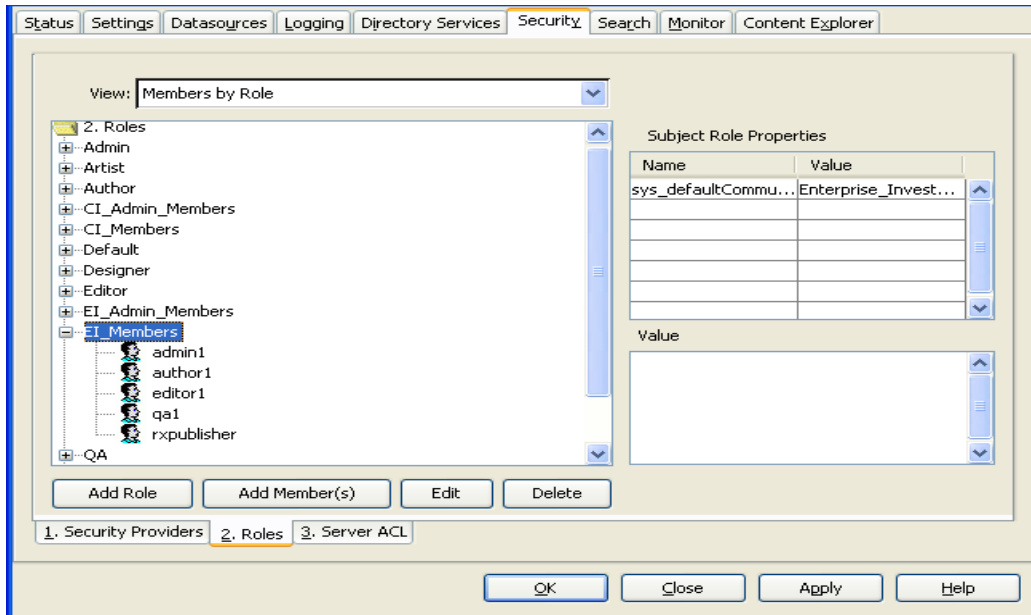
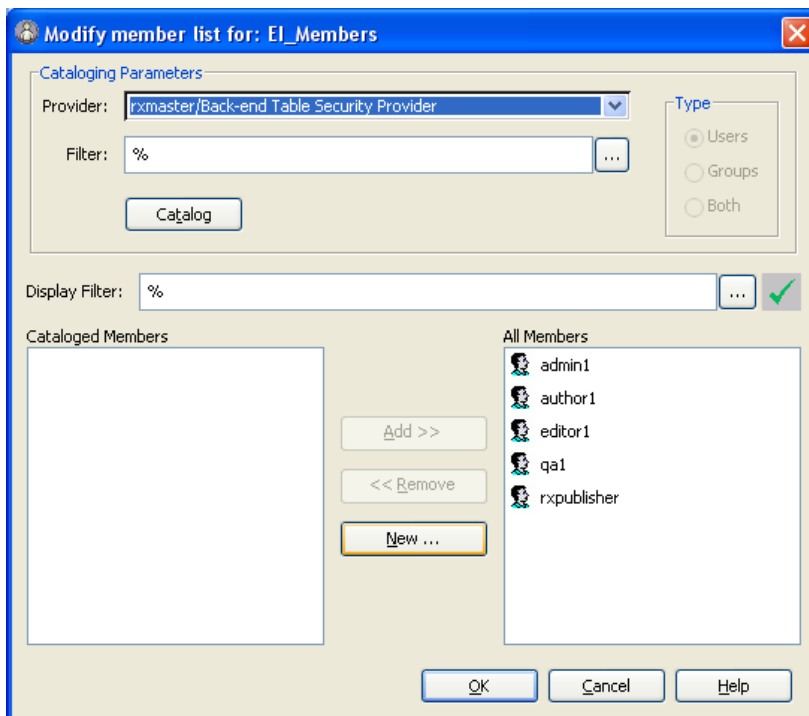


## Adding *rxserver* to a Workflow Administrator role

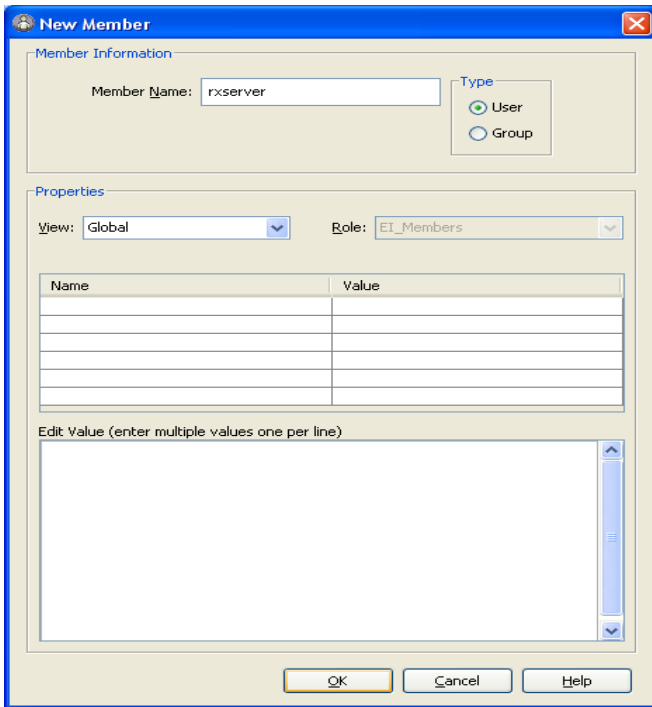
1. To add *rxserver* to your workflow administrator role, please highlight the role and click on the “Add Member(s)” button.



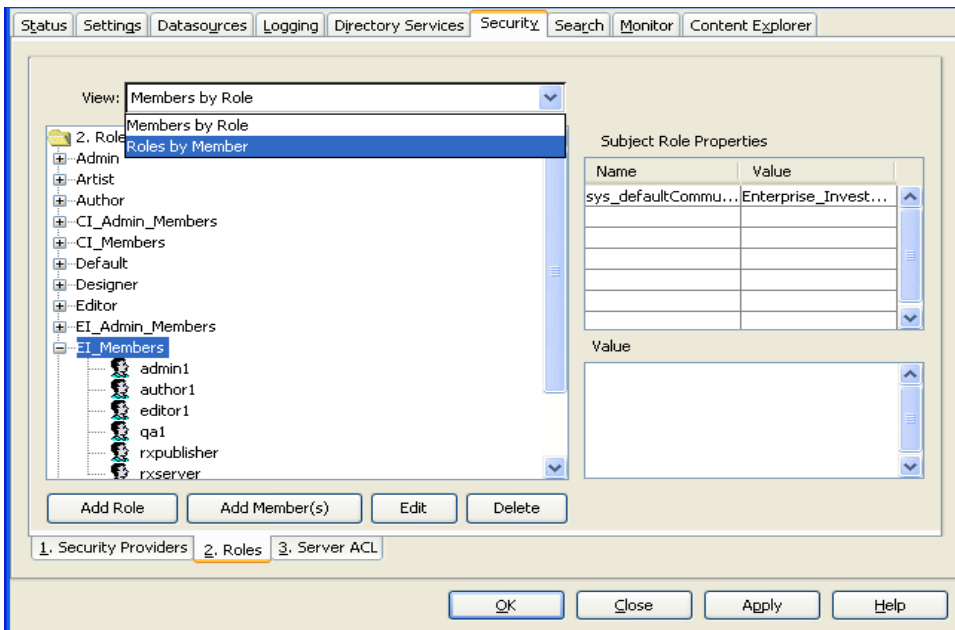
2. Click on the “New...” button to add the member



3. Enter *rxserver* in the Member name field.
4. Click OK



5. Save your workflow administrator role, and choose “Roles by Member” to verify that he has been added correctly.



6. Verify that rxserver is a member of the specified roles

